



India Meteorological Department
Earth System Science Organisation
(Ministry of Earth Sciences)

BULLETIN NO.: 44 (BAY OF BENGAL 01/2020)

TIME OF ISSUE: 2030 HOURS IST

DATED: 21.05.2020

FROM: INDIA METEOROLOGICAL DEPARTMENT (FAX NO. 24643965/24699216/24623220)

TO: CONTROL ROOM, NDM, MINISTRY OF HOME AFFAIRS (FAX.NO. 23093750)

CONTROL ROOM NDMA (FAX.NO. 26701729)

CABINET SECRETARIAT (FAX.NO.23012284, 23018638)

PS TO HON'BLE MINISTER FOR S & T AND EARTH SCIENCES (FAX NO.23316745)

SECRETARY, MOES, (FAX NO. 24629777)

H.Q. (INTEGRATED DEFENCE STAFF AND CDS) (FAX NO. 23005137/23005147)

DIRECTOR GENERAL, DOORDARSHAN (23385843)

DIRECTOR GENERAL, AIR (23421105, 23421219)

PIB MOES (FAX NO. 23389042)

UNI (FAX NO. 23355841)

D.G. NATIONAL DISASTER RESPONSE FORCE (NDRF) (FAX NO. 26105912, 2436 3260)

DIRECTOR, PUNCTUALITY, INDIAN RAILWAYS (FAX NO. 23388503)

CHIEF SECRETARY, WEST BENGAL (FAX NO. 033-22144328)

CHIEF SECRETARY, GOVT. OF ODISHA (FAX NO. 0674 -2536660)

CHIEF SECRETARY, GOVT. OF ASSAM (FAX NO. 0361-2237200)

CHIEF SECRETARY, GOVT. OF MEGHALAYA (FAX NO. 0364 - 2225978)

CHIEF SECRETARY, GOVT. OF SIKKIM (FAX NO. 03592 -204323)

Sub: Super Cyclonic Storm 'AMPHAN' (pronounced as UM-PUN) lay as a Depression over Bangladesh

The Deep Depression [remnant of the Super Cyclonic Storm 'AMPHAN'] moved slightly northwards with a speed of 07 kmph during past 06 hours, further weakened into a **Depression** and lay centered at 1730 hrs IST of today, the 21st May 2020 over **Bangladesh** near Lat. 25.4°N and Long. 89.6°E about 350 km north-northeast of Kolkata, 70 km south-southwest of Dhubri and 50 km east-southeast of Rangpur (Bangladesh).

It is very likely to continue to move north-northeastwards and weaken further into a well marked low during next 12 hours.

(1) Heavy rainfall Warning:

Assam & Meghalaya: Light to moderate rainfall at most places with heavy to very heavy at isolated places very likely over west Assam and isolated heavy falls over Meghalaya during next 12 hours.

Arunachal Pradesh: Light to moderate rainfall at most places with heavy to very heavy falls at isolated places very likely during next 12 hours.

(2) Wind warning

Squally wind speed reaching 30 to 40 kmph gusting to 50 kmph very likely over Western Assam & Western Meghalaya during next 12 hours and reduce gradually thereafter.

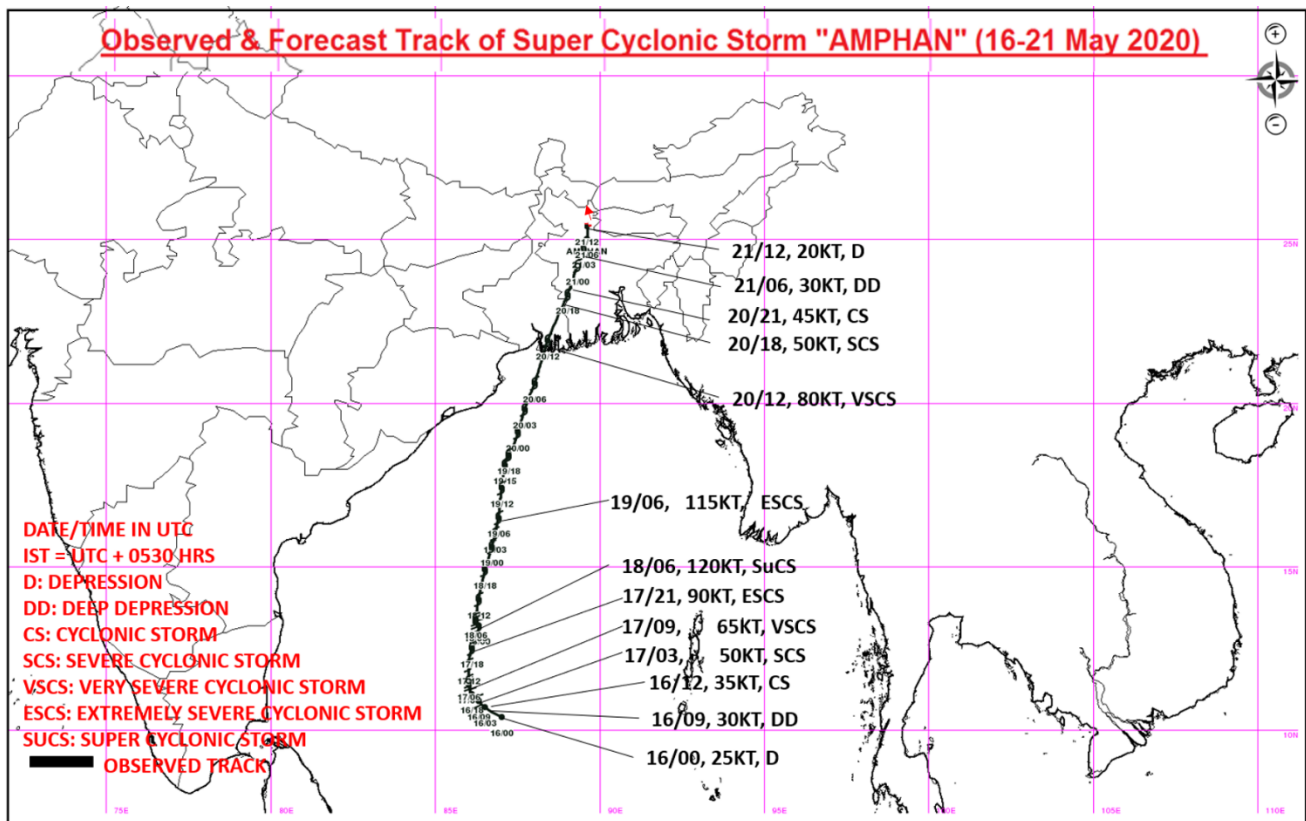
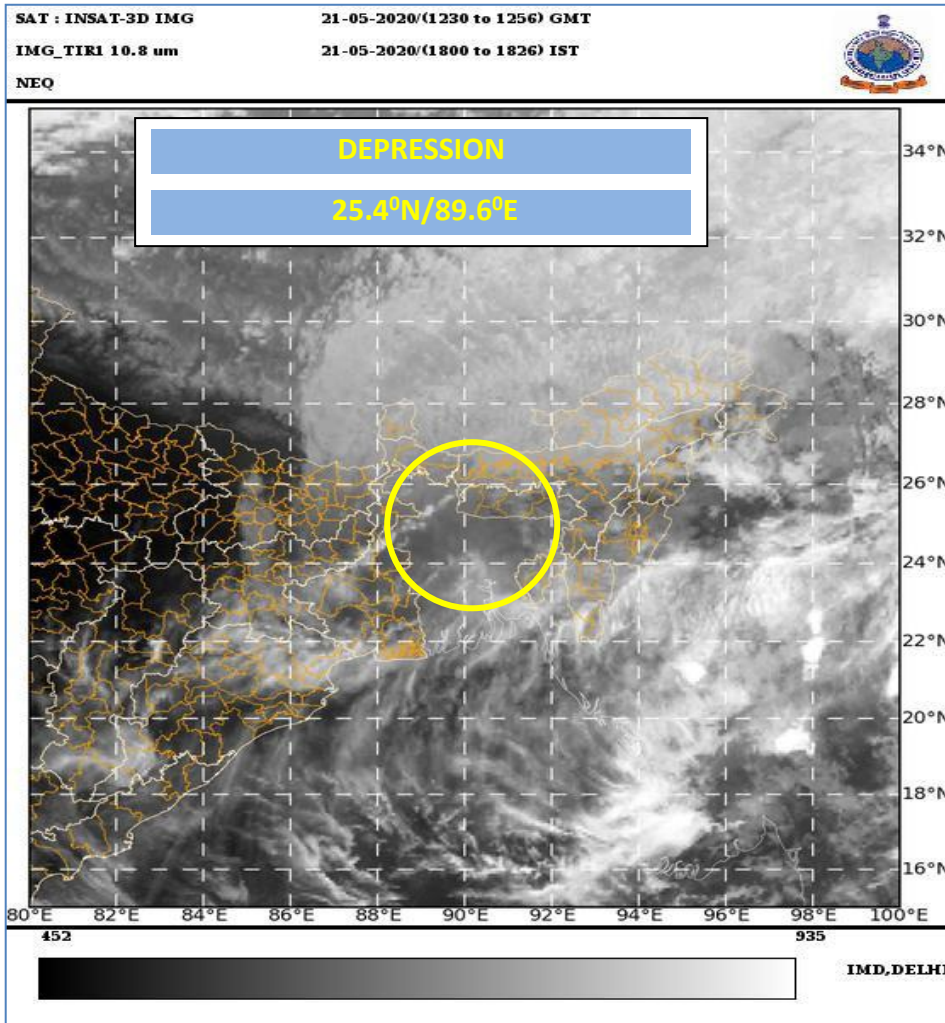
Kindly visit www.rsmcnewdelhi.imd.gov.in and www.mausam.imd.gov.in for updates on the system.

Next Bulletin will be issued at 0230 hours IST of tomorrow, the 22nd May, 2020.

(Sunitha Devi)
Scientist-E, RSMC, New Delhi

Copy to: RMC Guwahati/ ACWC Kolkata

Spatial rainfall distribution: Isolated: <25%, A few: 26-50%, Many: 51-75%, Most: 76-100%
Rainfall amount (mm): Heavy rain: 64.5 – 115.5, Very heavy rain: 115.6 – 204.4, Extremely heavy rain: 204.5 or more.



Spatial rainfall distribution: Isolated: <25%, A few: 26-50%, Many: 51-75%, Most: 76-100%
 Rainfall amount (mm): Heavy rain: 64.5 – 115.5, Very heavy rain: 115.6 – 204.4, Extremely heavy rain: 204.5 or more.